

Perfit FS

vatech

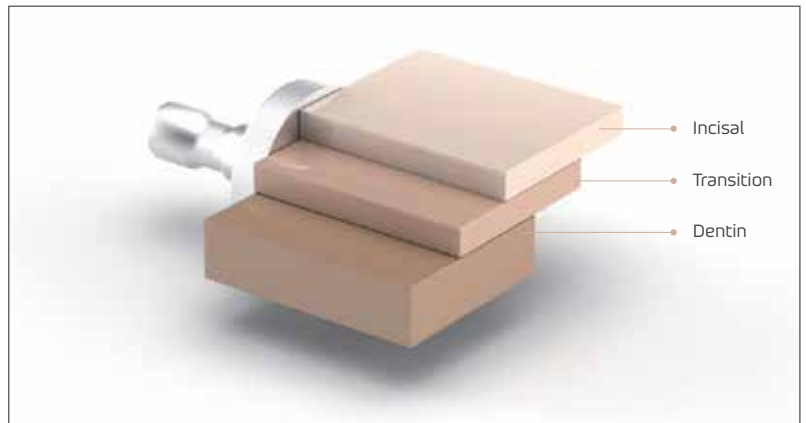
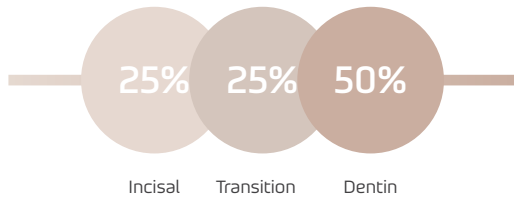
World's 1st Machinable
Fully-Sintered Zirconia Block



Perfit FS

Ultimate naturalness

The seamless 3-Layered structure



Fast workflow

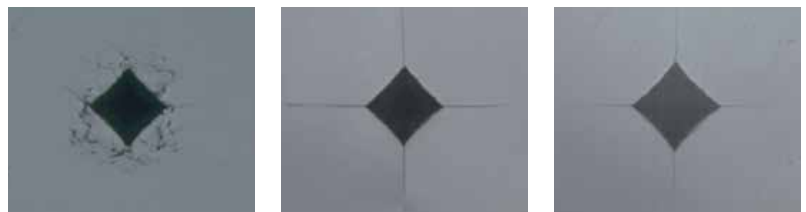
Save time, as no firing required



High level of crack resistance

After Vickers indentation at 10kg load

Compared to conventional general zirconia disc (3Y-TZP) and glass ceramic, Perfit FS shows no apparent cracks emanating from the corners of the diamond indentation, indicating its exceptional fracture toughness. In conclusion, restorations of Perfit FS have greater crack resistance than other types of restorations shown below.



Perfit FS

3Y-TZP

Glass Ceramic

500 MPa, High Flexural Strength

Wide Range of Indications



Frequently Asked Questions

Q Is Perfit FS made of zirconia?

A Yes. This product is made of 100% zirconia.

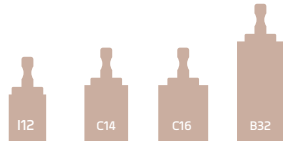
Q Does Perfit FS block require a firing process?

A Firing is not needed since Perfit FS block is a fully crystallized(sintered) block.

Q How many sizes are available?

A Perfit FS is available in 4 sizes. The sizes of the block are below.

- I12 (15.0 X 12.0 X 10.4)
- C14 (18.0 X 14.0 X 12.7)
- C16 (18.0 X 15.9 X 17.8)
- B32 (32.0 X 15.1 X 15.1)



Q Which milling machines are compatible with Perfit FS?

A 4-axis or 5-axis wet-type milling machine that can mill glass ceramic blocks.

*Before using Perfit FS, technical support requires your milling machine to check the milling strategy including the tool and CAM system.

Q Available Milling Machines

Milling Machine	S/W	Tool Life
Imes-icore - CORiTEC One/One+ - CORiTEC 150i pro	Millbox hyperDENT	Over 20 units (Perfit Customized Bur)
Dentsply Sirona -CEREC MC X -CEREC MC XL -CEREC Primemill -inLab MC XL	inLab S/W Cerec S/W	25 Blocks (Pointed Bur) 12 Blocks (Step Bur)
Roland DG -DXW-42W	MillBox	Over 20 units (Perfit Customized Bur)

Q Is it possible to stain Perfit FS?

A Perfit FS can be stained and glazed by using various manufacturers' products.

Q Is it possible to polish the surface of Perfit FS?

A High gloss polishing is not recommended as it can decrease the strength and aesthetic compared to glazing.



vatech

13, Samsung 1-ro, 2-gil, Hwaseong-si, Gyeonggi-do, Korea, 18449

T. +82-31-8005-1800

F. +82-31-8005-1888

E. sales@vatechmics.com



VIDEO

Perfit